



Caliber Interconnect Solutions

Design for perfection

Coimbatore, India

Feb 2010





Vision and Mission

- **Vision**

“Provide the best solutions to the society by reaping the benefits of advanced technologies.”

- **Mission**

“Provide dependable services to the satisfaction of the customers through innovation and commitment.”

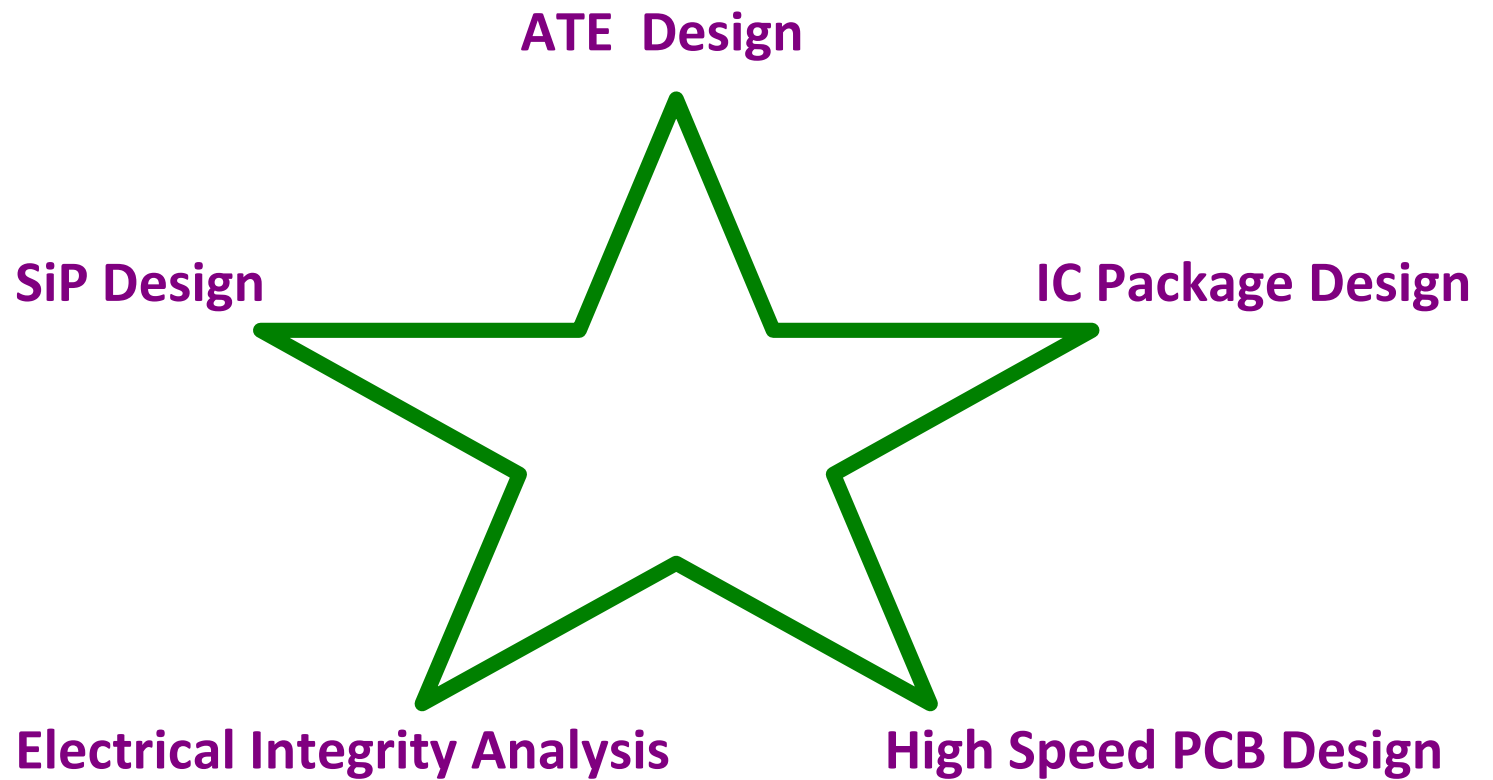


Profile

- Fast growing electronic design services company
 - Employees / Technologies / Services / Profits
- Expertise in High Speed PCB, SiP and IC package design Services to the Semiconductor industry
- 60+ specialized design resources
 - Highly skilled and experienced employees
- High Quality & Timely delivery for attractive cost
 - Highest customer satisfaction



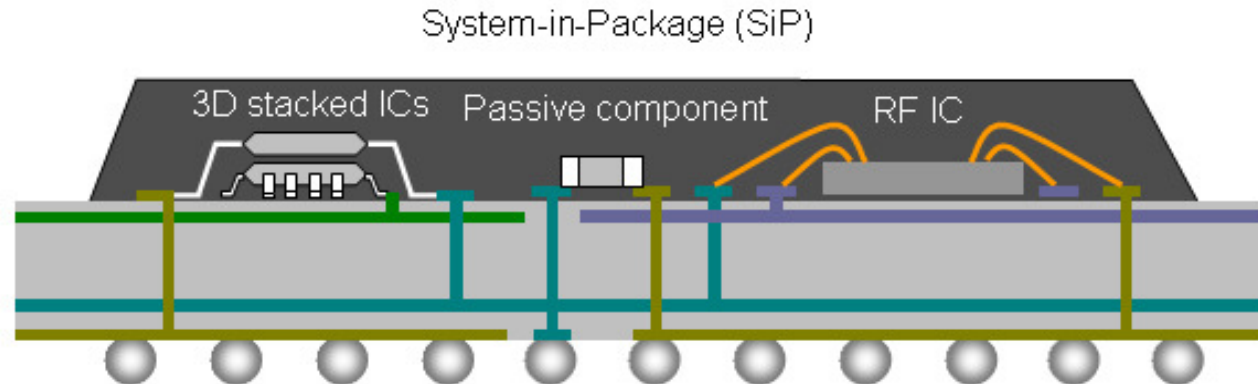
Services





SiP (System-in-Package) Design

SiP design solutions from Caliber Interconnect enables to shrink the size and weight of a Printed Wiring Board into a SiP with increased electrical performance



Applications:

Cellular

802.11 WLAN

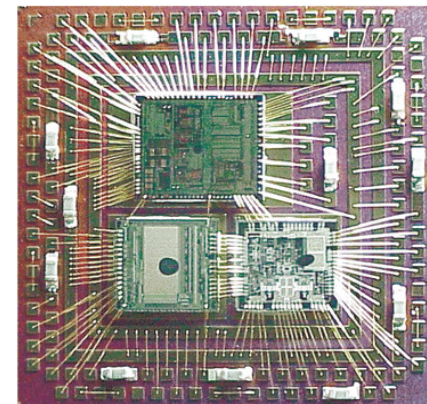
Camera

CMOS Sensors

GPS

Bluetooth

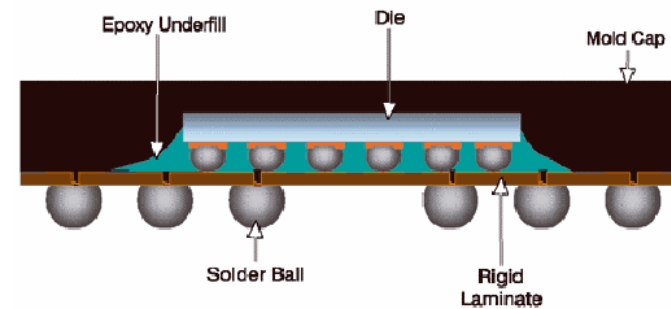
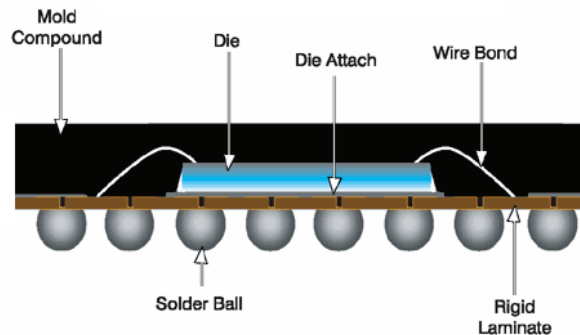
PDA





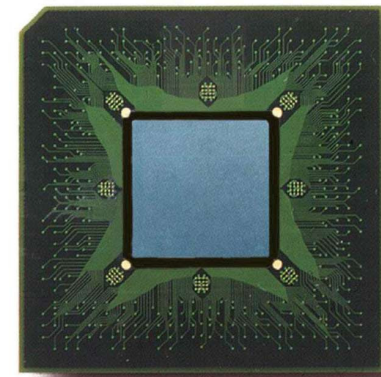
IC Package Design

We offer IC package design services for emerging design technologies includes Flip Chip, stacked die, POP, PIP, MCMs and CSP in addition to wire bond BGAs for mixed signal and RF-IC products.



- Passive Integration in package
- Selection of Substrate Material
- Signal & Power Integrity analysis
- Electrical & Thermal modeling

Caliber Interconnect Solutions Pvt
Ltd





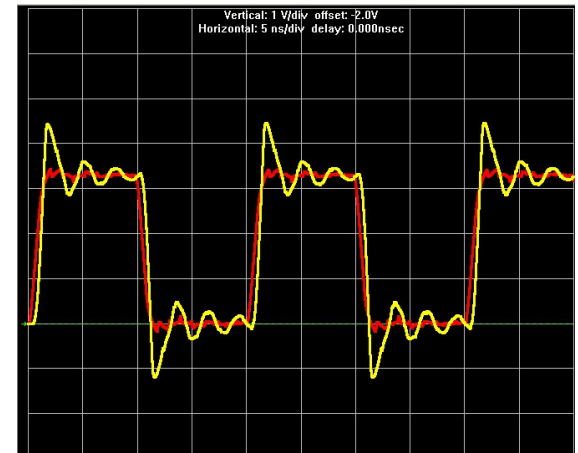
Electrical Integrity Analysis

The interconnects operating at high frequency and fast switching rates demand SI analysis for the right design for first pass success.

Caliber Interconnect's SI engineers are having strong knowledge in SI theory and expertise in simulation tools to analyze various SI issues.

The following electrical analysis are carried out in two phases, the pre and post layout analysis:

- Signal Integrity Analysis
- Timing Analysis
- Power Integrity Analysis
- EMI/EMC Analysis
- S-parameter Analysis

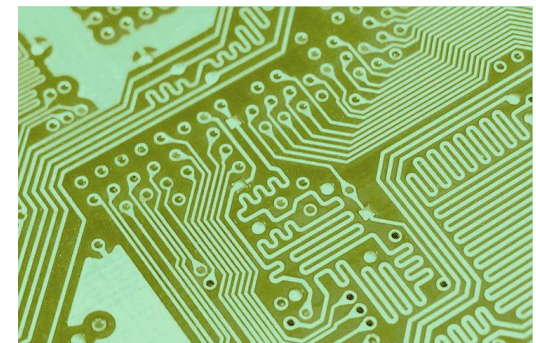
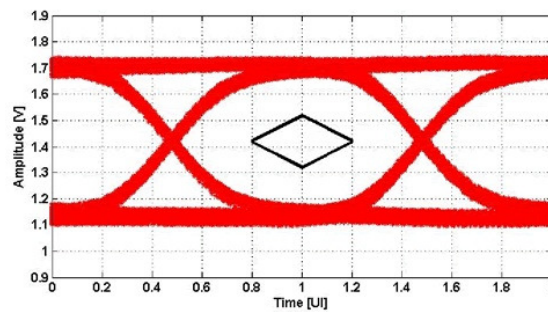




High Speed PCB Design

- Expertise in design of Multi-layer High Speed PCB
- Expertise in Multi-site for High Pin Count devices
- In-house developed tools for quality checking.
- Boards are designed for reduced distortion, delays and Low noise.
- Pre and post layout SI / Thermal & Power analysis
- 100% design for manufacturability.
- Extensive collection of well maintained footprint

library



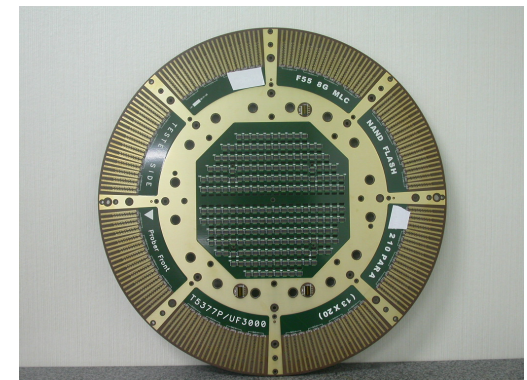
Ltd



ATE Load Board Design

Our ATE design and routing support services for partial and full designs are exclusive for test interface board vendors and ATE test system manufacturers. We support designing the following ATE hardware.

- Universal, Speciality and Blade Probe cards
- Device interface boards(DIB) & Load boards
- Handler Interface Boards & Probe interface boards
- Bench Boards & Evaluation Boards
- Characterization Boards & Reference Boards
- Adapter Cards & Burn in Boards
- Hast Boards
- ESD and Latch up boards





Advantage Caliber

- ◆ **Flexible Business Models**
- ◆ **Best Infrastructure**
- ◆ **Best Quality**
- ◆ **In-time Delivery**
- ◆ **Customer Integrity**
- ◆ **Expertise in the Focused Domains**
- ◆ **In-house Developed Various IPs**
- ◆ **Cost Effectiveness**



Caliber Interconnect Solutions Pvt
Ltd



Contact Details

M/S Caliber Interconnect Solutions Pvt Ltd

No 6 , 1 st Street, Gandhi Nagar

Kavundampalayam, Coimbatore -30, TN, India

Phone: 91 - 422 - 3042131

info@caliberinterconnect.com

www.caliberinterconnect.com



Thank You

Caliber Interconnect Solutions Pvt
Ltd